

HYUPSHIN FLANGES



Flanges

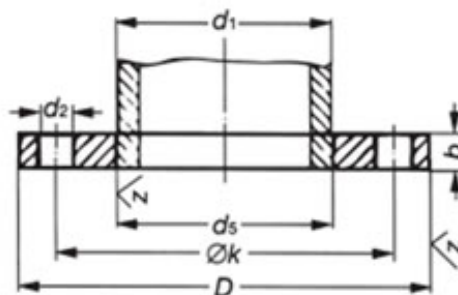
Flansche

Brides

Plane Welding Flanges DIN 2573



Material:
1.4541 / 1.4571



DIN 2573 PN 6

DN	Tube		d ₅	D	Flange			Drilling			Weight in kg =
	line 1	line 2			b	e	k	Number	Thread	d ₅	
10	-	14,0	14,5	75	12	5	50	4	M 10	11	0,363
10	17,2	-	17,7	75	12	5	50	4	M 10	11	0,363
15	-	20,0	21,0	80	12	5	55	4	M 10	11	0,410
15	21,3	-	22,0	80	12	5	55	4	M 10	11	0,410
20	-	25,0	26,0	90	14	5	65	4	M 10	11	0,600
20	26,9	-	27,6	90	14	5	65	4	M 10	11	0,600
25	-	30,0	31,0	100	14	5	75	4	M 10	11	0,740
25	33,7	-	34,4	100	14	5	75	4	M 10	11	0,740
32	-	38,0	39,0	120	16	5	90	4	M 12	14	1,190
32	42,4	-	43,1	120	16	5	90	4	M 12	14	1,190
40	-	44,5	45,5	130	16	5	100	4	M 12	14	1,390
40	48,3	-	49,0	130	16	5	100	4	M 12	14	1,390
50	-	57,0	58,1	140	16	6	110	4	M 12	14	1,530
50	60,3	-	61,1	140	16	6	110	4	M 12	14	1,530
65	76,1	-	77,1	160	16	6	130	4	M 12	14	1,890
80	88,9	-	90,3	190	18	7	150	4	M 16	18	2,980
100	-	108,0	109,6	210	18	7	170	4	M 16	18	3,460
100	114,3	-	115,9	210	18	7	170	4	M 16	18	3,460
125	-	133,0	134,8	240	20	7	200	8	M 16	18	4,600
125	139,7	-	141,6	240	20	7	200	8	M 16	18	4,600
150	-	159,0	161,1	265	20	7	225	8	M 16	18	5,220
150	168,3	-	170,5	265	20	7	225	8	M 16	18	5,220
200	219,1	-	221,8	320	22	7	280	8	M 16	18	7,150
250	-	267,0	270,2	375	24	7	335	12	M 16	18	9,610
250	273,0	-	276,2	375	24	7	335	12	M 16	18	9,610
300	323,9	-	327,6	440	24	7	395	12	M 20	22	12,600
350	355,6	-	359,7	490	26	7	445	12	M 20	22	15,600
350	-	368,0	372,2	490	26	7	445	12	M 20	22	15,600
400	406,4	-	411,0	540	28	7	495	16	M 20	22	18,400
400	-	419,0	423,7	540	28	7	495	16	M 20	22	18,400
(450)	457,0	-	462,3	595	30	7	550	16	M 20	22	21,400
500	508,0	-	513,6	645	30	7	600	20	M 20	22	24,600

If possible, don't use parenthesized sizes.

Sizes of row 1 are international, those of row 2 occasionally are used in Germany.

All items and specifications are subject to revision.
All sizes in mm

We Supply following steel flanges in norms:

In DIN-Standard:

Blind Flanges: DIN 2527 PN 6 / PN 10 / PN 16 / PN 25 / PN 40 / PN 64 / PN 100

Welding Flanges: DIN 2573 PN 6 / DIN 2576 PN 10 / DIN 2501 / DIN 2502 / DIN 2503 / DIN 2543 PN16

Welding Neck Flanges: DIN 2631 PN 6 / DIN 2632 PN 10 / DIN 2633 PN 16 / DIN 2634 PN 25 / DIN 2635 PN 40

Lapped Flanges: DIN 2641 PN 6 / DIN 2642 PN 10

Threaded Flanges: DIN 2565 PN 6 / DIN 2566 PN 16

In UNI-Standard:

Blind Flanges: UNI 6091 PN 6 / UNI 6092 PN 10 / UNI 6093 PN 16 / UNI 6094 PN 25 / UNI 6095 PN 40

Welding Flanges: UNI 2276 PN 6 / UNI 2277 PN 10 / UNI 2278 PN 16 / UNI 6083 / UNI 6084

Welding Neck Flanges: UNI 2280 PN 6 / UNI 2281 PN 10 / UNI 2282 PN 16 / UNI 2283 PN 25 / UNI 2284 PN 40

Lapped Flanges: UNI 6088 PN 6 / UNI 6089 PN 10/ UNI 6090 PN 16

Threaded Flanges: UNI 2253 PN 6 / UNI 2254 PN 16

In EN 1092-1 Standard:

Blind Flanges: Type 05 PN 6 / PN 10 / PN 16 / PN 25 / PN 40

Welding Flanges: Type 01 PN 6 / PN 10 / PN 16 / PN 25 / PN 40

Welding Neck Flanges: Type 11 PN 6 / PN 10 / PN 16 / PN 25 / PN 40

Lapped Flanges: Type 02 PN 6 / PN 10 / PN 16

Threaded Flanges: Type 13 PN 6 / PN 16

Raw Material for Carbon Steel:

European Norms: C22.8, RSt 37-2, S235JRG2, C21, P245GH, P250GH, P265GH

ASTM Norms: A105, A350

We provide all flanges according to your specifications and drawings, we delivery flanges to all ports where you in anywhere.

JINAN HYUPSHIN FLANGES CO., LTD

No6, Nanbei Road, Niupai, Mingshui,
Zhangqiu City, Shandong,
China - 250 200

President : Mr. Guo Zhaoji

Director : Mr. Hong Songjo

Tel : + 86 531 832 945 52

Fax : + 86 531 832 918 78

Marketing Director: Mr. Austin. Guo

Tel : + 86 531 836 354 21

Fax : + 86 531 832 977 28

Email: austin@hyupshin.cn

Skype : iguorui

For Marketing & Products enquiries:

sale@hyupshin.cn

www.forged-flange.com

www.hyupshin.cn